

Matching.

___1. Crescendo

___2. Ritardando

___3. Piano

___4. Allegro

___5. ☺

___6. Diminuendo

___7. Forte

___8. Andante

___9. Vivace

___10. Cantabile

___11. Legato

___12. Sforzando

___13. Adagio

___14. Staccato

___15. Dolce

- a. Fast
- b. Gradually get softer
- c. Loud
- d. Walking speed
- e. Smooth, connected
- f. Lively, quick
- g. In a singing style
- h. Gradually get louder
- i. Short, detached
- j. Soft
- k. Slow
- l. Hold longer than value
- m. Gradually get slower
- n. Sweetly
- o. A sudden accent

Name the following notes on the Grand Staff:

A Grand Staff consisting of two staves: a treble clef staff on top and a bass clef staff on the bottom. The notes are as follows:

- Treble clef staff:
 - Measure 1: C4 (middle C)
 - Measure 2: D4
 - Measure 3: E4
 - Measure 4: F#4
 - Measure 5: G4
 - Measure 6: A4
 - Measure 7: B4
 - Measure 8: C5
 - Measure 9: D5
 - Measure 10: E5
 - Measure 11: F5
 - Measure 12: G5
 - Measure 13: A5
 - Measure 14: B5
- Bass clef staff:
 - Measure 1: C3
 - Measure 2: D3
 - Measure 3: E3
 - Measure 4: F3
 - Measure 5: G3
 - Measure 6: A3
 - Measure 7: B3
 - Measure 8: C4
 - Measure 9: D4
 - Measure 10: E4
 - Measure 11: F4
 - Measure 12: G4
 - Measure 13: A4
 - Measure 14: B4

Draw the following notes and rests on the Grand Staff:

A Grand Staff consisting of two staves: a treble clef staff on top and a bass clef staff on the bottom. The staff is divided into eight measures. The labels for each measure are:

Quarter rest	Half rest	Eighth note	Whole note	Eighth rest	Whole rest	Dotted 1/2 note	16 th note
--------------	-----------	-------------	------------	-------------	------------	-----------------	-----------------------

In the following example, fill in the missing rest(s):

(one per measure)

A musical staff in 3/4 time. The notes and rests are as follows:

- Measure 1: Quarter note (C4)
- Measure 2: Quarter note (D4)
- Measure 3: Quarter note (E4)
- Measure 4: Quarter rest
- Measure 5: Quarter note (F4)
- Measure 6: Quarter note (G4)
- Measure 7: Quarter note (A4)
- Measure 8: Quarter note (B4)
- Measure 9: Quarter note (C5)
- Measure 10: Quarter note (B4)
- Measure 11: Quarter note (A4)
- Measure 12: Quarter note (G4)
- Measure 13: Quarter note (F4)
- Measure 14: Quarter note (E4)
- Measure 15: Quarter note (D4)
- Measure 16: Quarter note (C4)

Name the following scales:

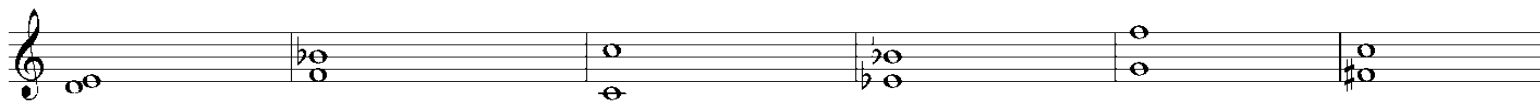




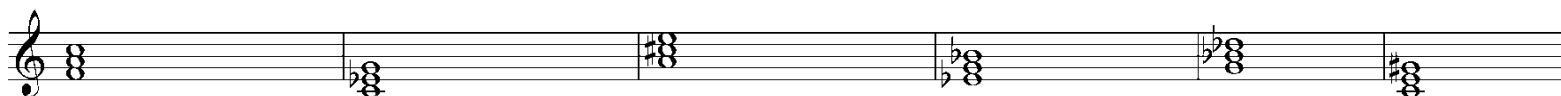




Name the following intervals. Include size and quality. Example: MA 3 = Major 3rd



Name the following triads:



Name the following seventh chords:





Complete the following four-part writing exercise:

The image shows a musical exercise on two staves. The top staff uses a treble clef and the bottom staff uses a bass clef. Both staves are in the key of D major, indicated by two sharps (F# and C#). The music is in 4/4 time. The top staff contains a melodic line with quarter notes in the first two measures, followed by a half note in the third measure, and a quarter note in the fourth measure. The bottom staff contains a bass line with quarter notes in the first two measures, followed by a half note in the third measure, and a quarter note in the fourth measure. The piece concludes with a double bar line.

Name _____

Phone _____

E-mail _____

Instrument/Voice _____

Prep Teacher _____

Age _____

Please attach the completed form to an e-mail directed to Ellen Harrison,
ellen.harrison@uc.edu